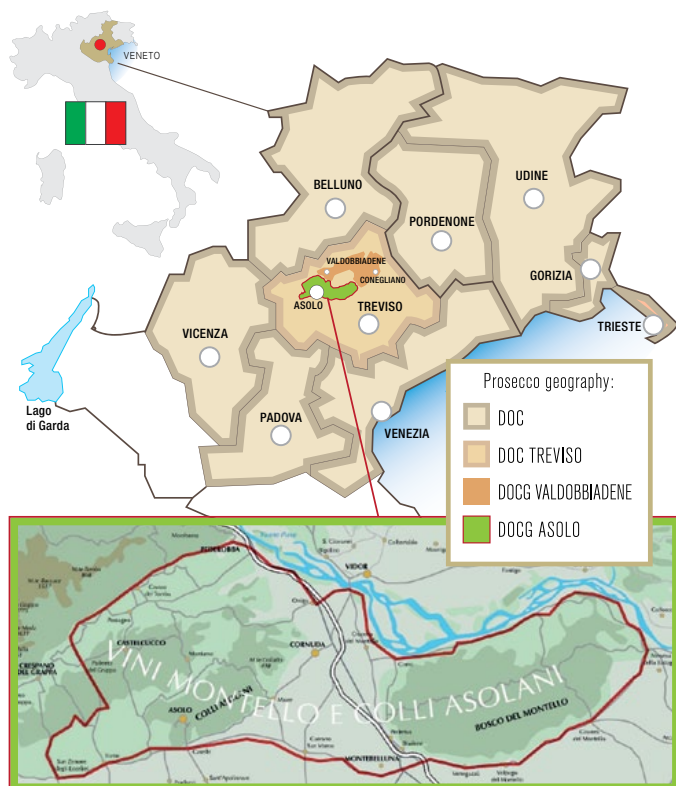


# ASOLO PROSECCO SUPERIORE DOCG

Asolo Prosecco DOCG superiore is a small subregion located within the larger DOC area, centred around the charming village of Asolo and the foothills known as "Colli Asolani". The soil composition in this area is rich with large percentages of clay, resulting in a full bodied, very elegant sparkling wine with distinctive creamy and velvety bubbles.



## EXTRA BRUT

Grape variety:	Glera
Alcohol content:	11,5%
Residual sugar:	1 ● ● ● ●
Available formats:	0,75L.   1,5L.



## BRUT

Grape variety:	Glera
Alcohol content:	11%
Residual sugar:	9 ● ● ● ●
Available formats:	0,75L.   1,5L.



## EXTRA DRY

Grape variety:	Glera
Alcohol content:	11%
Residual sugar:	14 ● ● ● ●
Available formats:	0,75L.



## DRY MILLESIMATO

Grape variety:	Glera
Alcohol content:	11%
Residual sugar:	20 ● ● ● ●
Available formats:	0,75L.

# PROSECCO DOC TREVISO



**FRIZZANTE**  
SPAGO



**FRIZZANTE**  
SCREW-CAP



**EXTRA BRUT**



**BRUT**



**EXTRA DRY**



**ROSÉ BRUT**  
MILLESIMATO

<i>Grape variety:</i>	Glera
<i>Alcohol content:</i>	11%
<i>Residual sugar:</i>	● 12 ● ● ●
<i>Available formats:</i>	0,75L.

<i>Grape variety:</i>	Glera
<i>Alcohol content:</i>	11%
<i>Residual sugar:</i>	● 12 ● ● ●
<i>Available formats:</i>	200ml   0,75L.

<i>Grape variety:</i>	Glera
<i>Alcohol content:</i>	11%
<i>Residual sugar:</i>	● 4 ● ● ● ●
<i>Available formats:</i>	0,75L.

<i>Grape variety:</i>	Glera
<i>Alcohol content:</i>	11%
<i>Residual sugar:</i>	● 9 ● ● ● ●
<i>Available formats:</i>	375ml   0,75L.   1,5L.

<i>Grape variety:</i>	Glera
<i>Alcohol content:</i>	11%
<i>Residual sugar:</i>	● 15 ● ● ● ●
<i>Available formats:</i>	0,75L.   3L.*

<i>Grape variety:</i>	Glera, Pinot Nero
<i>Alcohol content:</i>	11%
<i>Residual sugar:</i>	● 10 ● ● ● ●
<i>Available formats:</i>	375ml   0,75L.   1,5L.

\* Enquire availability

# SPARKLING AND FRIZZANTE WINES



**IL LIEVE**  
MARCA TREVIGIANA IGT  
VINO FRIZZANTE



**HILARIS**  
MARCA TREVIGIANA IGT  
VINO FRIZZANTE



**ALLEGRO ROSÉ**  
MARCA TREVIGIANA IGT  
VINO FRIZZANTE

Grape variety:	Blend of local varieties
Alcohol content:	10,5%
Residual sugar:	0 ● ● ● ●
Available formats:	0,75L.

Grape variety:	Blend of local varieties
Alcohol content:	10,5%
Residual sugar:	● 13 ● ●
Available formats:	0,75L.

Grape variety:	Merlot
Alcohol content:	9,5%
Residual sugar:	● ● ● 25
Available formats:	0,75L.

## FRIZZANTE & SPUMANTE... WHAT DOES THAT MEAN?

Frizzante indicates a **lightly sparkling wine** with a gentler fizz and delicate bubbles that will last a little less in the glass. This is due to the lower pressure in the bottle, which is 2,5 bar or lower. You can tell a frizzante by the closure, which is usually a natural cork, a screw-cap or crown cap. Mushroom cork and foil are not allowed on this wine category.

On the other hand, a spumante wine is simply a **fully sparkling wine** with a stronger perlage. Although the term is at times mistaken for a synonym of sweet wine, there is no direct connection between the term "spumante" and sweetness: all styles from dry to sweet are possible.



**CUVÉE ROSÉ**  
EXTRA DRY  
SPARKLING WINE

Grape variety:	Merlot
Alcohol content:	11%
Residual sugar:	● 14 ● ●
Available formats:	0,75L.



**CUVÉE**  
EXTRA DRY  
SPARKLING WINE

Grape variety:	Blend of local varieties
Alcohol content:	11%
Residual sugar:	● 13 ● ●
Available formats:	0,75L.

NEW PACKAGING

## STILL WINES



### DOC WINES WITH GREAT PERSONALITY

An ode to the extraordinary potential, features and versatility of the Merlot and Pinot Grigio grape varieties, our "Onorevole Grigio" and "Tre e Venti" share a noble character and a distinctive personality...

With careful grape selection and skilled winemaking techniques, both wines are crafted to stand out thanks to their remarkable structure and striking food friendliness.



### OUR IGT WINES

A selection of still unoaked wines with moderate alcohol content and a distinctive freshness that makes them incredibly easy to drink. Honest and simple, our white and red IGT Marca Trevigiana wines truly reflect their origin and offer intriguing food-pairing opportunities.



### ONOREVOLE GRIGIO

PINOT GRIGIO DOC VENEZIA

*Grape variety:* Pinot Grigio

*Alcohol content:* 12%

*Residual sugar:* 4 ●●●●

*Available formats:* 0,75L

### TRE-E-VENTI

MERLOT DOC ASOLO MONTELLO

*Grape variety:* Merlot

*Alcohol content:* 13,5%

*Residual sugar:* ●●●●

*Available formats:* 0,75L

### CHARDONNAY

MARCA TREVIGIANA IGT

*Grape variety:* Chardonnay

*Alcohol content:* 11,5%

*Residual sugar:* 1 ●●●●

*Available formats:* 0,75L

### MERLOT

MARCA TREVIGIANA IGT

*Grape variety:* Merlot

*Alcohol content:* 12%

*Residual sugar:* ●●●●

*Available formats:* 0,75L

### CABERNET

MARCA TREVIGIANA IGT

*Grape variety:* Cabernet Sauvignon

*Alcohol content:* 12%

*Residual sugar:* ●●●●

*Available formats:* 0,75L

# SMALL/LARGE FORMAT WINES

## FAMILY TRADITION from grape to glass

Ever growing and evolving since the foundation in 1948, the Bedin family's commitment to crafting wine spans seven decades and four generations. Blending the wine traditions handed down over generations with a modern approach, we gradually shifted from being a simple farm to an innovative, state-of-the-art winery with ever growing dedication to raising quality and crafting delicious sparkling wines that capture the essence of the Asolo terroir, tradition and lifestyle. We are committed to sustainable winegrowing and ensure compliance to the highest international quality standards by proudly guiding each step of the journey from vine to bottle.



### SPECIALS

70 cl Grappa di Prosecco

### MINI AND HALF BOTTLES

200 ml | *Prosecco frizzante*  
375 ml | *Prosecco Brut*  
375 ml | *Prosecco Rosé*

### LARGE FORMAT WINES

Available in a carton gift-box or wooden case.

#### Magnum

Asolo Prosecco superiore DOCG  
(*Brut - Extra Brut*)

Prosecco DOC Treviso  
(*Brut - Rosé*)

#### Jeroboom

Prosecco DOC Treviso

#### Mathusalem

*(made to order)*

Prosecco DOC Treviso

